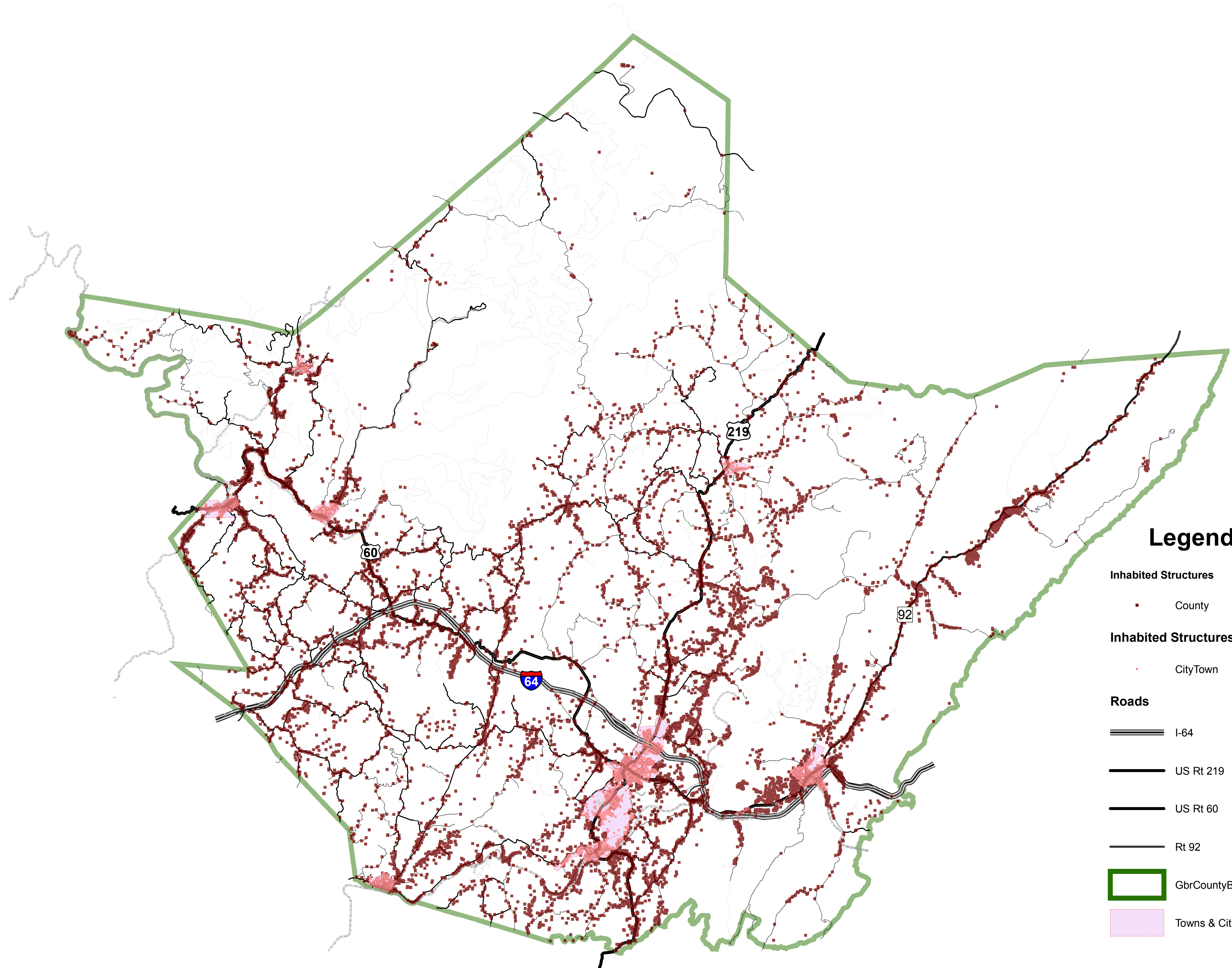


Inhabited Structures



Legend

- Inhabited Structures**
 - County (Red square)
 - CityTown (Red dot)
- Roads**
 - I-64 (Thick double line)
 - US Rt 219 (Thick solid line)
 - US Rt 60 (Medium solid line)
 - Rt 92 (Thin solid line)
- Boundaries**
 - GbrCountyBoundary (Thick green line)
 - Towns & Cities (Light purple shaded area)